



**Director of Infrastructure
Asset Management**

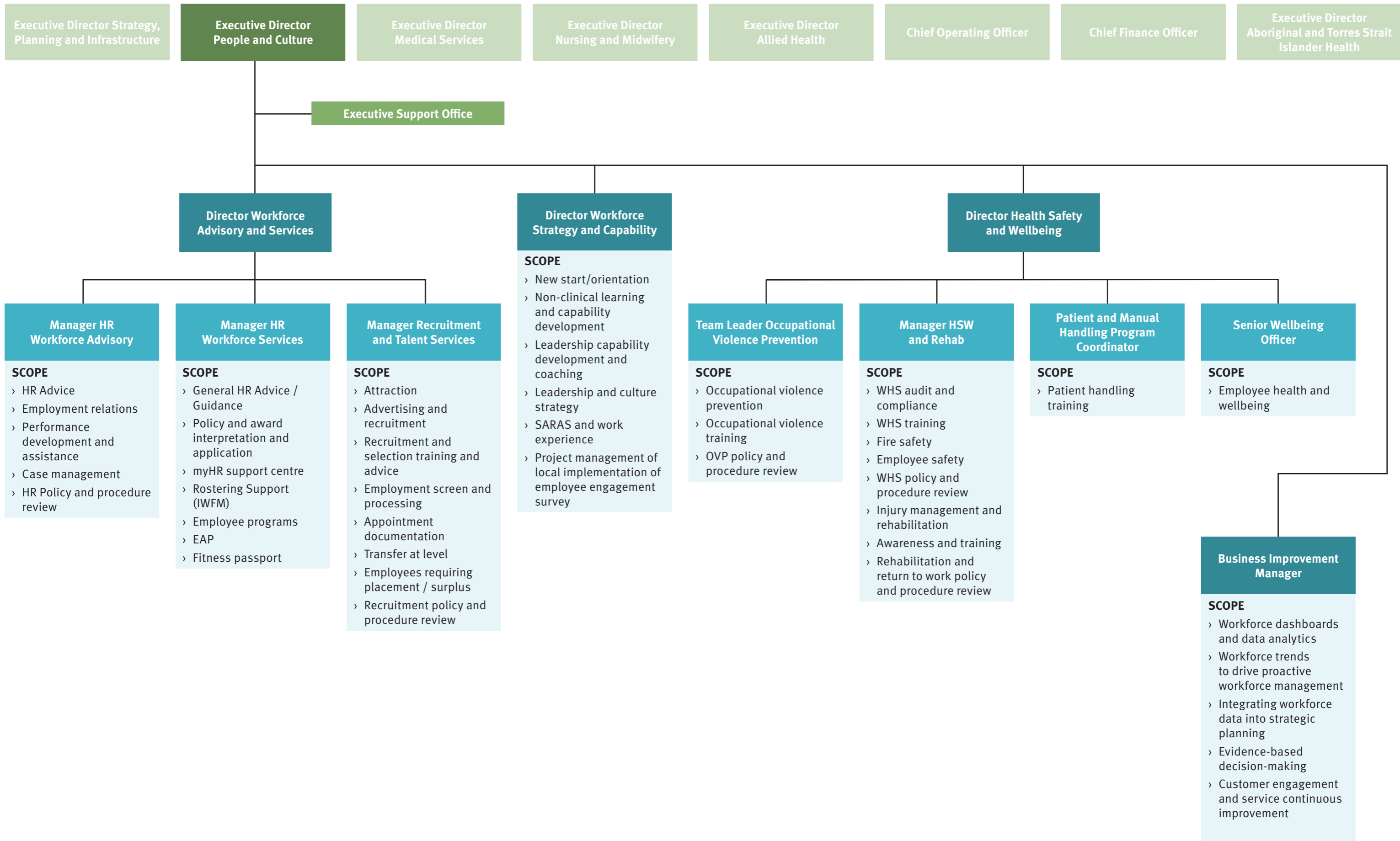
- SCOPE**
- › Building Engineering Maintenance Services (BEMS)
 - » Planned maintenance
 - » Corrective maintenance
 - › Asset Management
 - » Condition assessments
 - » Facility condition overviews
 - › Planning and scheduling
 - › Minor new works
 - › Compliance

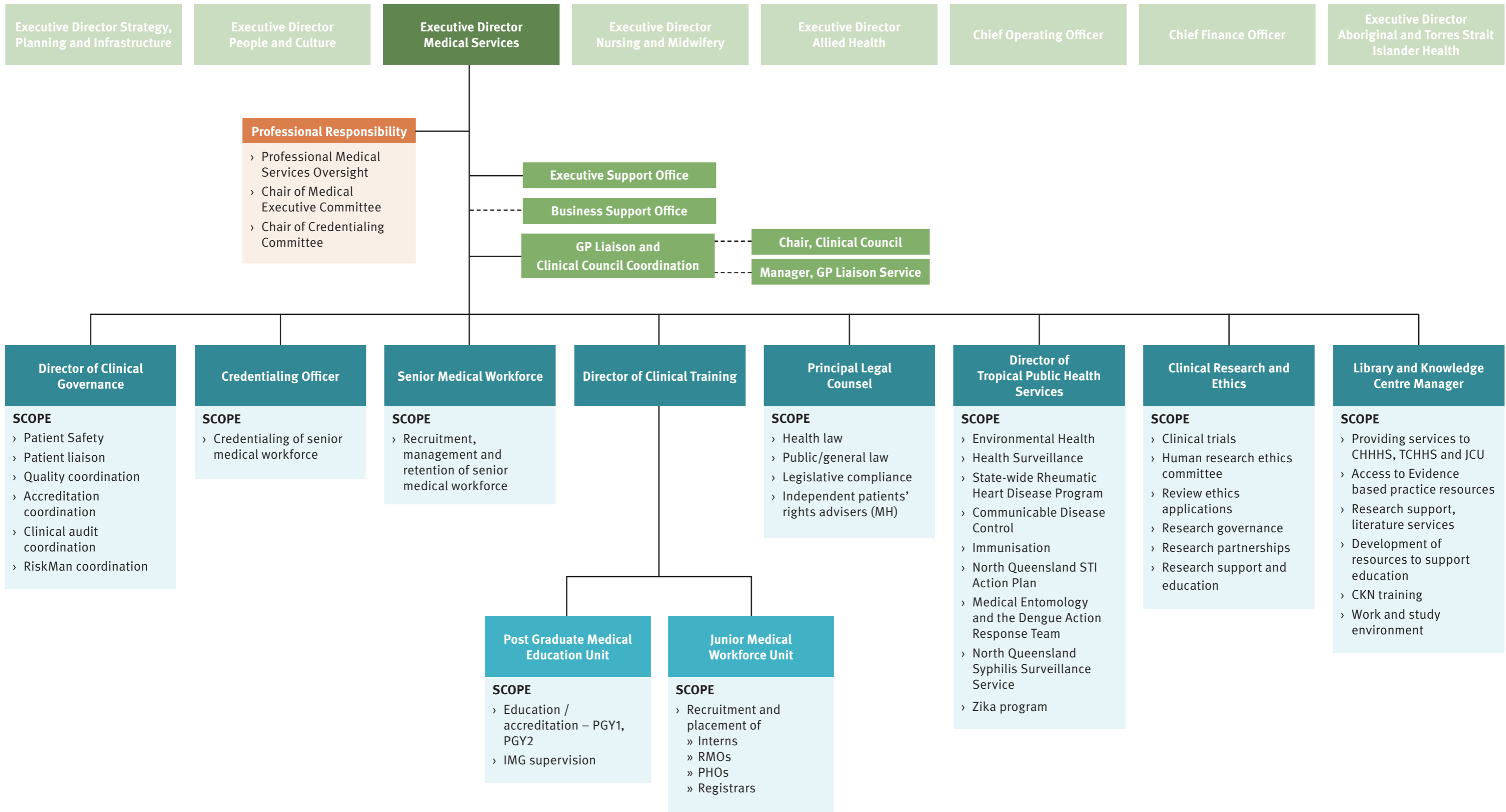
**Director of
Capital Infrastructure**

- SCOPE**
- › Capital planning
 - › Capital delivery
 - › Operationalisation of projects

**Director of
Strategy and Planning**

- SCOPE**
- › Strategic planning
 - › Clinical service planning
 - › Partnerships
 - › Innovation
 - › Environmental sustainability







Professional Responsibility

- › Professional Nursing and Midwifery Oversight
- › Chair of Nursing Leadership Committee
- › Chair of Nursing and Midwifery Advisory Council
- › Chair of BPF Steering
- › Standard 6
- › Standard 8
- › Nursing Research and Education
- › Liaison for Office of Chief Nursing Officer and Chief Midwifery Officer
- › Nursing and Midwifery Award oversight
- › Nursing and Midwifery Credentialling

Executive Support Office

Nursing Director Strategy Planning and Workforce

SCOPE

- › Business planning framework
- › Workforce clinical support
- › Nursing resource unit

Nursing Director Education and Research

SCOPE

- › Skills centre
- › Nursing and midwifery education
- › Research
- › Clinical facilitation
- › Graduates program

Infection Control Clinical Nurse Consultant

SCOPE

- › Support practices for prevention and management of healthcare associated infection
- › Staff VPD
- › Manage occupational exposures
- › Education and consultancy in relation to infection prevention control

Nursing Director Professional Practice and Standards

SCOPE

- › Professional Practice and National Accreditation Standards

Navigator Lead

SCOPE

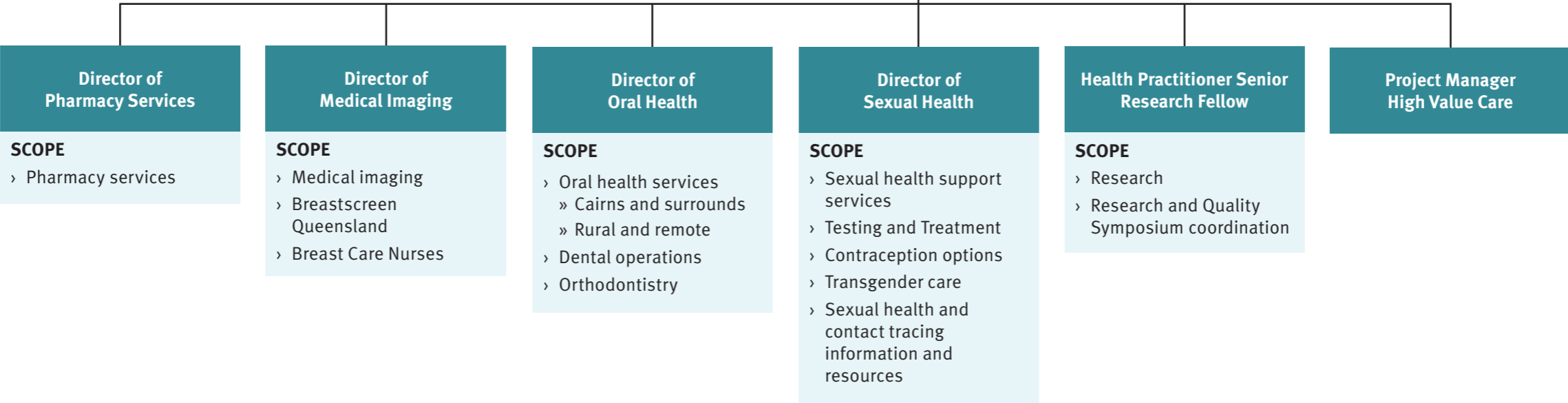
- › Advanced practice-led model of care

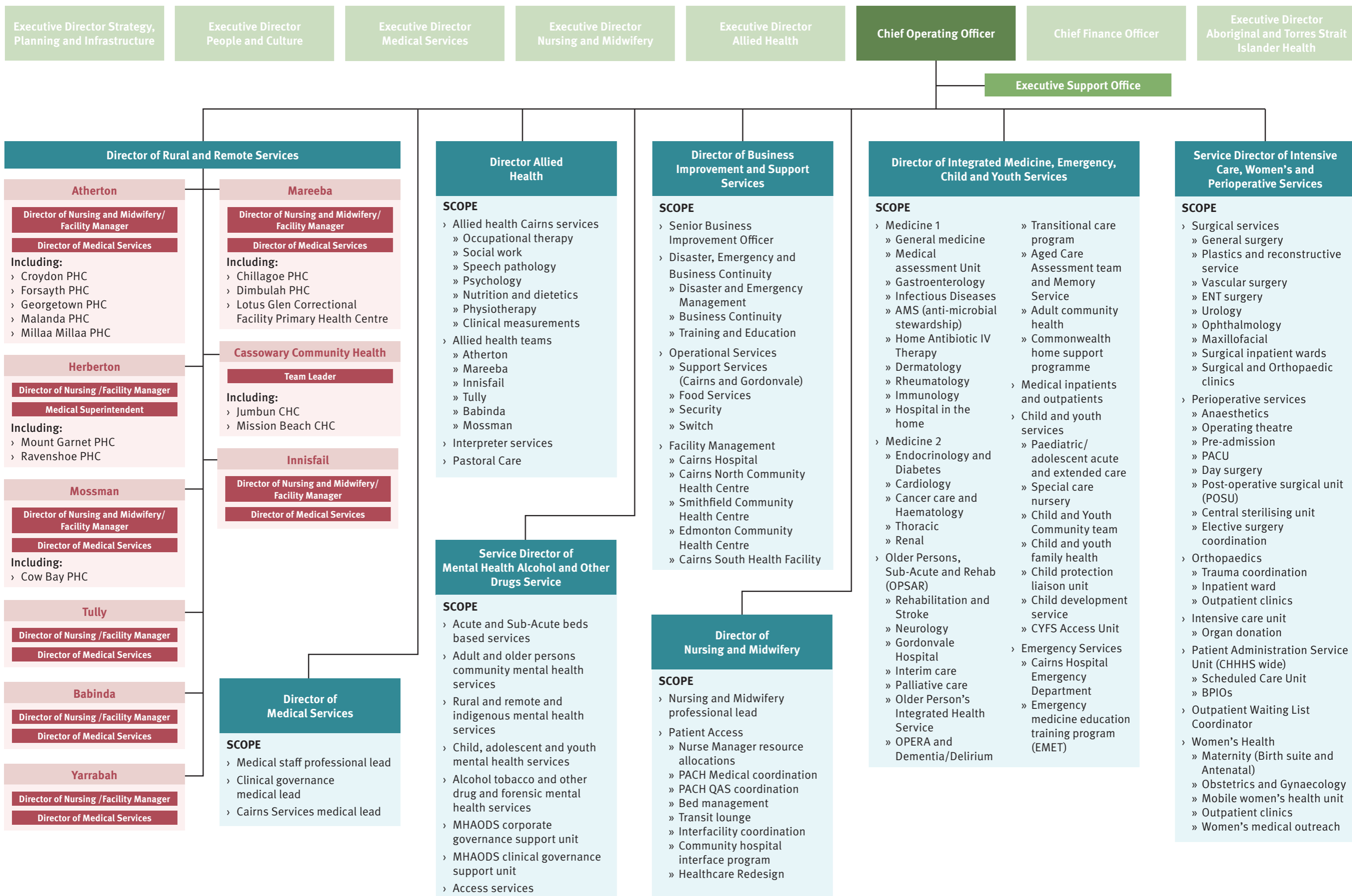


Professional Responsibility

- › Professional Governance for Allied Health
- › Chair of Allied Health Executive Committee
- › Allied Health Credentialing
- › Allied Health research and
- Education
- › HP/DO Award oversight
- › Allied Health Clinical Education
- › Liaison for Office Chief Allied Health Officer

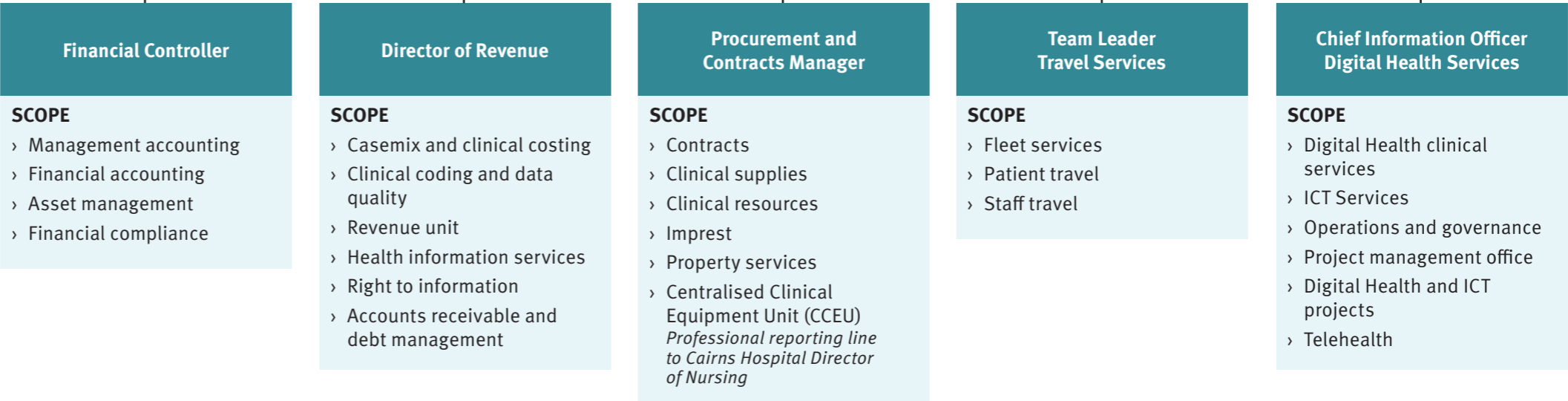
- Executive Support Office
- Business Manager
- Business Support Office







Executive Support Office





Executive Support Office

Director
Aboriginal and Torres Strait
Islander Health

Health Worker
Cluster Coordinator

Indigenous MHAODS
Cluster Coordinator

Health Worker
Cluster Coordinator

Professional Responsibility

PROFESSIONAL RESPONSIBILITY

- › Aboriginal and Torres Strait Islander Health Worker and Hospital Liaison Officer oversight
- › Inc co-chair Aboriginal and Torres Strait Islander Health Worker Committee

SCOPE

- › Policy, planning and advice
- › Provision of high level strategic and operational advice
- › Cultural capability
 - » Mandatory Cultural Capability Training
 - » Framework implementation
- › Stakeholder engagement
- › Representation on state-wide forums